

# THE PERENNIAL POST

NORTHWEST PERENNIAL ALLIANCE



SPRING 2016 | VOLUME 26 | ISSUE 2

## The NPA Spring Plant Sale is May 1

Michele Cournoyer



*Primula denticulata*  
Taking Root Nursery



*Uvularia grandiflora*  
Taking Root Nursery



*Epipactis palustris*  
Bouquet Banque

### NPA SPRING PLANT SALE SUNDAY, MAY 1, 9 AM – 3 PM

North Seattle College  
9600 College Way North, Seattle  
Plenty of free parking

**O**UR BIGGEST PLANT SALE of the year is coming Sunday, May 1, to North Seattle College. This fundraising event brings together a select group of small nurseries and local growers who usually aren't open to the public. It's a big enough sale to offer a huge selection, but personal enough to give you the chance to learn more about new plants from the experts selling them. As an added bonus, you can shop tax-free while you help support the educational programs of NPA and the NPA Border.

We asked a couple of favorite vendors what plants you should consider adding to your list of must-haves this year.

Bill Roeder of Bouquet Banque recommends hardy *Epipactis* (stream orchids), moisture loving perennials that flaunt stunning orchid-like flowers. Perhaps you'll be among the lucky few to snag one of his rare *Epipactis palustris*, with spikes of blooms that last a long, entrancing time. He'll also have rare *Epipactis gigantea* 'Serpentine Night', with dark burgundy foliage, and the Pacific Coast native *Epipactis gigantea*, which is a show-off specimen that can grow four feet tall.

If you've always wanted a fragrant *Arisaema*, follow your nose to Bouquet



*Arisaema candidissimum*  
Bouquet Banque



*Salvia lemmonii*  
Lee Farms



*Epimedium pinnatum colchicum*  
Bouquet Banque

Continued on page 3

- MAY 1** | **NPA Spring Plant Sale**, Sunday, 9 am – 3 pm, North Seattle College (details, page 1 & 3)
- MAY 6** | **Open Gardens season begins.** Watch your mailbox for your copy of 2016 Open Gardens Directory.
- MAY 19** | **“Cottage Style Flower Arranging”** class with Jennifer Carlson, Thursday, 10 am – noon, Bellevue Botanical Garden (see classes, page 6)
- JUNE 6** | **“Container Design 101”** class with Ilse Nethercutt and Kathy Moss, Monday, 1 – 3 pm, Marysville (see classes, page 6)
- JUNE 8** | **“Get Potted in Poulsbo!”** class with Tonya Cole, Wednesday, 10 am – noon, Poulsbo (see classes, page 6)
- JUNE 10-12** | **Sorticulture Garden Arts Festival**, Friday-Sunday, Legion Memorial Park, Everett (details, page 8)
- JUNE 11-12** | **Yakima Gardens and Wine Tour**, Saturday – Sunday (details, page 4)

## A warm welcome to our new members

Diana Ackerly  
Trisha Albrecht  
Bruce Alverson  
Janice Barcello  
Marcia Bartholme  
Heidi Bartos  
Lauren Bauer  
Martha Belden  
Earlene Benefield  
Lavonne Benner  
Diane Bero  
Rhonda Bjornstad  
Jennifer & Garry Blankenship  
Judy Boxx  
Judith Bracik  
Ellen Braun-Kelly  
Joyce Brekke  
Vicky Broback  
Don Brooks  
Joan Broughton  
Meryl Brownstein  
Paul Brynes  
Jeff Buchan  
Kathleen and John Bullivant  
Theresa Burciaga  
Rosemary Burkhart  
Patti Cagle  
Sylvia Cameron  
June Campbell  
Barbara Catania  
Cathy Chase  
Heather Chastain  
Nita Conlan  
Susan Cotner  
Nina Cox  
Delores Craig  
Susan Daggett  
Lynn de la Maza  
Mary DeBoer  
Danielle DeBray  
Barbara DeCaro  
Jeff and Yukiko Deckrow  
Cherryl Dennis

Emily Dexter  
Rhonda Duckworth  
Martha Elafros  
Jean Emmons  
Sharon Englund  
Kimberly Englund  
Sandy Evans  
Cynthia Evans  
Jane Falding  
Machiko Faught  
Margaret Feige  
Alejandra Feliciano  
Betty Felker  
Suzanne & Jeff Fike  
Heather Flaxman  
Lyndall Foulds  
Elizabeth Frankenberger  
Brad & Rosemary Freeman  
Martia Frewen  
Shannon Gammon  
Bonnie Gemmill  
Ken Gerry  
Gail Gibbard  
John Gideon  
Susan Gillmor  
Leslie Gloe  
Phyllis Gorton & Nan Frederick  
Jennifer Greenfield  
Marilyn Gremse  
Gina McCullough Grohs  
Casey Gunning  
Marit Gustin  
Ann Haynes  
Melissa Hambleton  
Donna Hamilton  
Jennifer Harris  
Lynne Harvey  
Alice Hayes  
Ed Hazen & Sue Holbink  
Susan Hedrick  
Cherie Hembree  
Marilyn Henderson  
Peggy Herron

Mary Ann High  
Catherine Hillenbrand  
Eve Hobson & Nathalie Kohlman  
Sandra Hollenbeck  
Janet Hornbecker  
Cheryl Hungate  
Pauline Jarman  
Gretchen Kae  
Lonnie Kaufman  
Teresa Keenholts  
Allyson Kemp  
Doreen Kindred  
Leila Kipp  
Marydina Kirkby  
Mary Kay Kite  
Ann Klosterman  
Janet Knudsen  
Candace & Bob Krick  
Diane Kukull  
Katarzyna Kurek-Moore  
Anthony Lamberti  
Lauren Larkin  
Karen Larsen  
Janyce Lauhon-Horton  
Judith Leckrone Lee  
Vicki Lee  
Nancy Leigh  
Louise Lindgren  
Barbara Lycett  
Mary Maertens  
Vicki Mar  
Una McAlinden  
Virginia McCarty  
Virginia McDonald  
Barbara McGrath  
Pat McGuinness  
Marilyn McNeil  
Barbara McNurlen  
Susan Melgaard  
Elizabeth Merrill  
Penny and Larry Merriman  
Dineen Moewe  
Dee Montpetit

M. Lynn Moore  
Cynthia Morris  
Elizabeth Nelson  
Amanda Nichols  
Diane Nichols  
Penny O’Byrne  
Pat O’Donoghue  
Margaret Osburn  
Sara Page  
Patty Parker-Gillis  
Marcia Pauley  
Marisa Pena  
Pam Penney  
Joanne & Richard Perry  
Bruce Peters  
Nancy Petersen  
Chrissy Petoff  
Anthony Pittenger  
JoAnn Rademacher  
Iola Ratcliff  
Denise Read  
David & Sharon Remagen  
Liz Rhodes  
Candace Richards  
Patricia Riley  
Maggie Robertson  
Catherine Rooks  
Eriko Rossano  
Samuel Sacharoff  
Polly Sanford  
Jeanne Schollmeyer  
Cindy Scott  
Beverly Sears  
Lorelei Seifert  
Laura Sevonty  
Melinda Simon  
Carol Slosberg  
Alan Smith  
Joy Smith & Jerry Hanson  
Miriam Smith  
Sharman Smith  
Sandra Sowers  
Karen Steeb

Arlene Stelzer  
Gary Sutton  
Valerie Tasche  
Dr. David J Thomsen  
Terry Thorpe  
Diane Threlkeld  
Ann Thurley  
Izabella Turska  
Lois Van Ottingham  
Beverly van Hartesvelt  
Ilka VanWaasen  
Janice Verburg  
Korie Voorheis  
Sheryl Ward  
Maryann West  
Lynel Westby  
Diana & David Weston  
Therese White  
Shirley Williams  
Jean Yeaman  
Caroline Zebroski

### Business Members

Anne Lindsay Photography  
Antique Rose Farm  
Cascadia Iris Gardens  
Classic Nursery & Landscape Co.  
David McDonald Photography  
Hale Landscaping Inc.  
Hillside Desert Botanical  
Gardens  
Lil Sprout Nursery and Garden  
Center  
My Garden Nursery  
Plantasia Gardens  
Savage Plants and Landscape  
Sky Nursery  
South Seattle College Arboretum  
Streissguth Gardens  
Tapestry Garden and Farm  
West Seattle Nursery  
White Picket Flower Farm

## NPA Plant Sale

Continued from page 1

Banque's *Arisaema candidissimum*, one of the few *Arisaemas* known for its sweet perfume. Take your pick of either white or pink flowers. Both are easy to grow.

With the record rains we've been having, Kathy Norsworthy of Taking Root Nursery is featuring moisture-loving plants. *Uvularia grandiflora* (Merrybells) tops her list. This wonderful spring blooming perennial sports bright, lemon-yellow flowers that really add sparkle to a shade garden. She also likes perennial primroses, which provide blooms in almost every color of the rainbow. *Primula japonica* blooms from April-July in fragrant flowers of white, lavender, red and rose. *Primula denticulata* (drumstick primrose), the most striking member of the primula family, grows rambunctiously in moist soil to form a large and showy group.

Taking Root Nursery will also have a wide selection of Trilliums. Nearly all of these early bloomers come in threes: three leaves, three flower petals, three



Trillium, Taking Root Nursery

blooming characteristics (upright, nodding, or drooping) and three-sectioned seedpods. Take your pick of colors from white, yellow and pink to red, maroon and nearly purple.

## NPA Spring Plant Sale Vendors

### BLUE FROG NURSERY

Russ & Miriam Smith

A tempting assortment of perennials, ground covers, shrubs, trees and azaleas  
[www.bluefrognursery.net](http://www.bluefrognursery.net)

### BOUQUET BANQUE

Judy Zugish & Bill Roeder

Fat, juicy, healthy, 2-gallon perennials  
[www.twigtwisters.com/nursery.html](http://www.twigtwisters.com/nursery.html)

### CELESTIAL DREAM GARDENS

Celeste Erickson

Healthy, well-grown plants, both tried and true or rare and few  
[celestialdreamgardens@hotmail.com](mailto:celestialdreamgardens@hotmail.com)

### EDMONDS COMMUNITY COLLEGE

(Horticulture Program)

Linda Toccoli

Perennials, shrubs, broadleaf evergreens and cactus

[Linda.toccoli@edcc.edu](mailto:Linda.toccoli@edcc.edu), 425-275-1763

### FANCY FRONDS

Judith Jones

Planted up miniature gardens, plus many plants for miniature, trough or rock gardens, unique *Abutilon* hybrids and a choice variety of ferns  
[www.fancyfronds-nursery.com](http://www.fancyfronds-nursery.com)

### GROWING GIRLS

Beth Burman

A North Bend nursery offering unusual shade-loving perennials  
425-888-0960

### KEEPING IT GREEN NURSERY

Arlen Hill

Garden-worthy perennials, trees, shrubs, vines and ferns from around the world  
[www.keepingitgreennursery.com](http://www.keepingitgreennursery.com)

### LEE FARM

Carrie & Dean Lee

Outstanding trees, shrubs, perennials, grasses and hardy fuchsias  
[www.leefarmandnursery.com](http://www.leefarmandnursery.com)

### NPA PLANTS

Wonderful plants from the NPA Border at BBG and our members' gardens  
[www.n-p-a.org](http://www.n-p-a.org)

### QUEEN'S CUP NURSERY

Pat Parks

Puget Sound easy care native perennials, including rare and hard to find plants  
[pat@queenscupnursery.com](mailto:pat@queenscupnursery.com)

### TAKING ROOT NURSERY

Kathy Norsworthy

Unusual perennials, hostas, ornamental grasses and ferns  
[www.takingrootnursery.com](http://www.takingrootnursery.com)

### WHITE PICKET GARDENS

Kristi Fina

Unusual perennials, drought tolerant plants, salvias and hebes  
[plant@snohomish.net](mailto:plant@snohomish.net)

### WIND POPPY FARM

Sara & John Burns

Grasses, sedges, rushes, water plants and perennials  
[www.windpoppy.com](http://www.windpoppy.com)

### WINDCLIFF PLANTS

Dan Hinkley and Robert Jones

Specializing in collections from around the world, including unusual vines, perennials, shrubs, trees, grasses and container plants  
[www.danieljhinkley.com](http://www.danieljhinkley.com)

Ready for sun? Carrie Lee, of Lee Farm, is selling *Salvia lemmonii*, a sage native with fragrant foliage and bright pink flowers that attract hummingbirds, bees and butterflies. She also recom-

mends two special vines, *Aristolochia californica* (California Pipevine), a slow growing beauty, and a small vine, *Billardiera longiflora* (Purple Appleberry), with striking purplish berries.

# Sign up now for the Yakima Gardens and Wine Tour

**JUNE 11 AND 12**

Departs 8:00 am from Bellevue Botanical Garden, returns Sunday evening

Max attendance: 22



HOP ON BOARD a comfortable mini-coach for an overnight tour to Yakima, where you will see five spectacular private gardens, the incredible Hillside Desert Botanical Garden, and the Yakima Arboretum. Shop at Country Garden Antiques for statuary, tools, Whichford horticultural pottery and other English goods. In addition to horticulture, we'll sample a bit of the local viticulture, and we've also been offered a peek into the world of artist Leo Adams.

## Price:

**\$275 (shared room)**

**\$335 (single room)**

Included in ticket price:

- Lodging at the Oxford Suites on the Yakima River
- Mini coach transportation
- Saturday and Sunday wine tasting and lunch at a winery
- Saturday evening reception with soup, salad and two drinks
- Sunday hot buffet breakfast

**Note: Arranged transportation to Bellevue Botanical Garden will be necessary, as overnight parking is not allowed.**

To reserve your place on the tour, call NPA at 425-647-6004 and send your check to NPA, 19105 36th Ave W, Suite 211, Lynnwood, WA 98036 or visit [www.n-p-a.org](http://www.n-p-a.org) to pay online.



Wyles garden pergola



Erickson garden



Country Garden Antiques barn



Knutson and Sell Garden

## A spring crop of books for gardeners

Gayle Richardson

### ORCHARD HOUSE: HOW A NEGLECTED GARDEN TAUGHT ONE FAMILY TO GROW

By Tara Austen Weaver

Tara Austen grew up in idyllic settings—Marin County and rural British Columbia. But for children raised by an abandoned mother, who herself had a hard-scrabble early life, gardening meant growing food which meant something on the table. As an adult, Austen searched to make a reconnection with home-grown food as both a means for a healthy way of life and a way to connect with her remote and unreachable mother. When the latter relocates to Seattle, and buys a house on a neglected half acre overgrown by blackberry, ivy and moss, Austen pitches in to garden with and without her parent. The book's sections, "Plan," "Plant," "Tend," "Gather," describe her setbacks and successes with both garden and mother.

Heavily hyped both nationally and locally (the author lives in Seattle and is editor of Edible Seattle Magazine), this tale of change and redemption through gardening will appeal strongly to fans of the hugely popular Annie Lamott.

### SHED DECOR: HOW TO DECORATE AND FURNISH YOUR FAVORITE GARDEN ROOM

By Sally Coulthard

### A WOMAN'S SHED: SPACES FOR WOMEN TO CREATE, WRITE, MAKE, GROW, THINK, AND ESCAPE

By Gill Heriz

Pure eye-candy here for those who might be looking for inspiration for their own property as well as those who enjoy peeking into the lives and surroundings of creative people. Both books are full of alluring color photographs, and for many of the structures, plants and gardens play an important role. Certain to get your creative juices flowing.

And because this is a full-service book review, something for the gentlemen as well:

### BLOKES AND SHEDS: BEHIND THE CORRUGATED IRON CURTAINS OF AUSTRALIA'S SHEDS

By Mark Thomson

One of the funniest, quirkiest and most offbeat books I've ever had the pleasure of reading. Just what is lurking in those (often) dilapidated looking structures? It's men...men with large collections of wire, bits of board, hammers, projects to do, and probably lots of cold beer as well. I had a friend who would order piles of these at a time from Australia; today it's easily available online for us American purchasers. As one review put it: "well suited to the coffee table and bath room." I smile every time I think of this book.

### MURDER CROPS UP

By Lora Roberts

A likable series from the '90s with a sympathetic heroine. Here, Liz Sullivan, struggling freelance writer, has moved up from living in her VW bus to a small cottage in Palo Alto where she gardens intensively, both at home and in a community garden. When a body turns up in the pea-patch, she is the subject of vicious gossip, innuendo and outright accusations of murder. Not one to take it lying down, she sets out to detect while dealing with several other personal complications. A character you'd be happy to talk plants with over the garden fence, and it's easy to track down penny copies online.

### EDWARD BAWDEN'S KEW GARDENS

By Peyton Skipwith and Brian Webb

Definitely one for just the coffee table! Your visitors will want to pet and fondle this charming, beautifully produced presentation of a period piece. Bawden (1903-1989) was a celebrated British artist with an "abiding interest in Kew" which lasted over 60 years. This volume, created from the loose manuscript found in a dusty box, is jam-packed with his stylized 1920's illustrations. Also included is an enhanced history of the garden with many illustrations and scandalous anecdotes dating back hundreds of years. A bit of a splurge, but a true delight. Maybe the Miller Library will be acquiring?



# NPA WORKSHOPS & CLASSES

# Spring

Thursday, May 19, 10 am - noon

## COTTAGE STYLE FLOWER ARRANGING CLASS

With Jennifer Carlson, Haven Illustrated, LLC  
Aaron Education Center,  
Bellevue Botanical Garden  
Fee: Members \$25/Nonmembers \$35  
(includes all materials)  
Class limit: 16



Please join us to learn the secrets of floral design with Seattle landscape and floral designer Jennifer Carlson. Learn how to arrange greens, flowers, and seed pods from your garden in a casual cottage style organic bouquet. Basic floral design principles and handouts will be provided in this demonstration and popular hands-on class.

Please bring pruning shears or floral scissors if you have them to make your own unique bouquet.

Organic flowers and foliage as well as containers will be provided by Jennifer.

Monday, June 6, 1 pm to at least 3 pm

## CONTAINER DESIGN 101: HANDS-ON HELP FOR NOVICE DESIGNERS

with Ilse Nethercutt and Kathy Moss  
Sunnyside Nursery, Marysville  
Fee: \$40 (includes a non-refundable \$25.00 voucher towards your plant purchases)  
Class limit: 10



Do you struggle with design decisions when it comes to your containers? Do you want your containers to have more style and interest? Join us at Sunnyside Nursery for a class that offers help beyond theory and provides more personalized design coaching.

Ilse and Kathy will provide instruction and demonstration of the basics as well as design tips and tricks on designing containers with annuals, perennials and foliage that are in harmony with their surroundings. You will be given hands-on assistance with designing a container to your own taste. With Ilse and Karen's help, you will go home with a set of plants for your container that you have chosen and assembled.

If you already have a particular container in mind, please bring a picture or at least its measurements.

Many thanks to our friends at Sunnyside for letting us use their classroom and beautiful nursery setting.

Wednesday, June 8, 10 am-noon

## GET POTTED IN POULSBO!

with Tonya Cole  
Poulsbo, 10 minutes from Kingston ferry  
Fee: \$40, includes container and plants  
Class limit: 25



Grab this opportunity to head to the Kitsap side for a container class at Petula Plants, a purveyor of the horticulturally wild and wonderful found in nurseries around Seattle and Portland and whose plants filled a test garden in downtown Edmonds in 2015. You aren't going to want to miss the chance to see all the lovely succulents in their closed-to-the-public location. A sleek, lightweight 12" container will be provided, as will a set number of plants and special soil "toppers" for the final touches on your succulent masterpiece. Additional plants will be available for purchase—we've seen their plants and predict that 100% of you will want more of them! See a bit of their work at this link:

<http://www.petulaplants.com/petulas-test-garden-2015/>

### REGISTER NOW FOR NPA CLASSES.

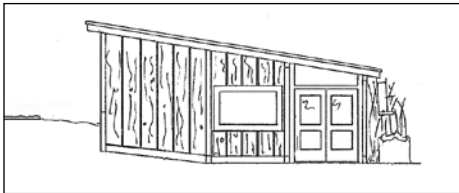
It's easy to register online at [www.n-p-a.org](http://www.n-p-a.org). Or contact the NPA Office at 425-647-6004. We'll be adding more classes throughout the year. Watch your emails, Facebook and future editions of The Perennial Post for details. If you have an idea for a class or workshop, contact Classes & Workshops at: [classes@northwestperennialalliance.org](mailto:classes@northwestperennialalliance.org)

# Construction begins on NPA's Plant Propagation Working Exhibit

Kit Haesloop

**T**HE NPA Plant Propagation Working Exhibit design phase is complete and construction will begin this month. The approximately 20 by 25 foot exhibit will be at the south end of the NPA Border across a visitors path. It will be used to educate volunteers and visitors about growing and propagating hardy herbaceous plants. The facility will also be used to propagate plants for our various plant sales to support the Border and NPA educational programs.

The drawing shows the front of the building as you approach it from the NPA Border. The structure will have a storage area for tools and a small covered workspace with the uncovered plant propagation area behind the building.



Working with a steep slope, the corner of the building and basalt columns (not pictured) will be used as a retaining wall. The structure will have vertical cedar siding which will help it to blend in with the adjacent woods. Existing benches are on either side of the exhibit with one close to the entrance. Rain from the roof will flow into a basalt bowl and from there into the adjacent forest. The exhibit will be fenced to keep out deer and rabbits. Finally, a new path will be created alongside the exhibit providing a connection between the perennial Border and Ground Cover garden.

Funding for this project has and will come from a variety of sources.

As this is an extension of the Border and NPA's working educational exhibit, NPA is providing funds. However, the project budget is beyond what NPA can



source internally. NPA was awarded a \$20,000 grant from the prestigious Stanley Smith Horticultural Trust and the Bellevue Botanical Garden Society donated almost \$27,000 to be used on the project. Additionally, the City of Bellevue donated granite pavers for use around the entrance of the exhibit.

Furthermore, many NPA members have been making donations to make this exhibit a reality. In our "Get tagged by NPA!" fundraiser for donations \$100 and above, NPA will give the donor a plant tag with up to three lines of free engraving. All donors will be invited to the Grand Opening, with part of the fun being to

find your tag to take home as a keepsake. To make a donation and receive your free, engraved tag, fill out the coupon below, donate over \$100 and mail your check and coupon to: NPA, 19105 36th Ave W, Suite 211, Lynnwood, WA 98036. You may also make a donation at [www.n-p-a.org](http://www.n-p-a.org).

NPA is excited to be constructing a beautiful, educational and productive addition to the Bellevue Botanical Garden. We suggest you come visit BBG and the Border and see the progress of the new Plant Propagation Working Exhibit as it unfolds. The Bellevue Botanical Garden has free admission and is open every day of the year from dawn to dusk.

## GET TAGGED BY NPA! - Plant Propagation Working Exhibit Donation

NAME \_\_\_\_\_

ADDRESS \_\_\_\_\_

CITY \_\_\_\_\_ STATE \_\_\_\_\_ ZIP \_\_\_\_\_

Donation amount \$ \_\_\_\_\_

*Each line is limited to 15 characters*

Line 1 \_\_\_\_\_

Line 2 \_\_\_\_\_

Line 3 \_\_\_\_\_

# Introducing NPA's new treasurer

*Kit Haesloop*

**P**LEASE WELCOME Trish Brooks, NPA's new treasurer and board member. NPA got lucky when Trish responded to the "Love Plants and Numbers" advertisement for a treasurer. She bubbled over about loving numbers, spreadsheets and gardening. What a perfect fit for the position!

After graduating from college, Trish began her career in retail management, followed by a short stint as an industrial



NPA Treasurer Trish Brooks

engineer. She eventually retired as a vice president in private banking after nearly 30 years in the banking industry.

An avid cyclist, triathlon and marathon veteran, kayaker, day hiker, fisherperson and beginning golfer, she spends much of her "home time" cooking, gardening and reading. On most Saturdays in the fall, you will find her at Husky Stadium cheering on her beloved football team.

Trish is an active member of an NPA neighborhood group on Whidbey Island and AAUW. She is an aspiring vegetable grower on the sandy shores of Puget Sound at her home on southern Whidbey Island.

We're thrilled that Trish made room in her busy life to put her bright mind and impressive energy to work keeping NPA in the green.

## Look for NPA at Sorticulture

**SORTICULTURE GARDEN ARTS FESTIVAL  
FRIDAY-SUNDAY, JUNE 10-12**

**LEGION MEMORIAL PARK, EVERETT**

LOOK FOR THE NPA BOOTH this June at Sorticulture in Everett. The immensely popular festival features garden art, specialty nurseries, a wine garden and live music. Our booth will be staffed by volunteers from three north-end neighborhood groups, Northern Exposure, Secateurs and Late Bloomers. There will be a daily drawing to give away three handcrafted prizes donated by NPA members Judy Zugish of Bouquet Banque, Matt Freed of Northwest Hardscapes, and Ilse Nethercutt of the NPA Board. All new members and current members who stop by to say hello will be eligible for the drawings. New members will take home our Open Gardens Directory so they can begin touring gardens immediately.

## Thank you, garden show volunteers!

MANY THANKS to all the volunteers who worked three-hour shifts at the NPA booth at this year's Northwest Flower & Garden show, recruiting new members and membership renewals for NPA. It was a great team effort by all.

Once again our booth featured our award-winning, three-dimensional panorama of the NPA Border, made with cut-outs of beautiful plant and animal photos, created last year by Linda Gray and Craig Wagner. This year's prize was a beautifully designed container with a butterfly

bottle. The winner was Shirley Williams, a new NPA member from Port Townsend. Congratulations, Shirley!



Shirley Williams with husband George





# Thank you to our donors

*Sincere thanks to our generous donors for supporting the many educational programs of NPA, including Open Gardens, the NPA Border, lectures, workshops and student scholarships. Membership dues alone do not cover the cost of providing these benefits; your gift supports our tradition of offering a broad range of activities that can be enjoyed by both new and seasoned gardeners alike.*

## **\$20,000 AND UP**

Bellevue Botanical Garden  
Society from Roy Harsh Estate  
Stanley Smith Horticultural  
Trust

## **\$1,000 - \$4,999**

Bellevue Botanical Garden  
Society

## **\$500 - \$999**

Gayle Richardson

## **\$250 - \$499**

Cathy Atkins  
Joyce & Steve Kormanyos  
Chitra & Zak Parpia

## **\$100 - \$249**

Barbara BonJour  
Alice Brewer  
Molly van der Burch  
Diana & Gary Davidson  
Tina Dixon & Paul Stredwick  
Noma Edwards  
Kenneth & Lucie Hamner  
Peggy Herron  
Tohnnie & Byron Ingalls  
Mary Helen Krock & John  
Mackean  
Denise Lane & Roel Allers  
Linda & Roger McDonald  
Janet & Mel McIntyre  
Sue Moss  
Rosalie Preble  
Sonja Ross & Pamela  
Merriman  
Millie Russell  
Tia Scarce

Steve & Pauline Smith  
Sunnyside Nursery Inc.  
Ralene Walls  
Joanne White  
Jenny Wyatt

## **\$51 - \$75**

Nancy Heckler  
Linda S. Park  
Norma & Rudolf Vogeli

## **\$26 - \$50**

Joan Baldwin  
Sandra Booren  
Virginia Brewer  
Brenda Bulen  
Kathleen Cook  
Everett Chu  
Luann Cunningham  
Udell Fresk  
Michael & Leslie Gillespie  
Jan Goetz  
Joyce Greenwood  
Kit Haesloop  
Carol Glass and Jeff Haley  
Catherine (Terry) Hayes  
Margaret Hayes-Thombre  
Elizabeth Hebert  
Elizabeth Hendricks  
Daniel & Darlene Huntington  
Jan Jensen & Harry Welling  
Bill McJohn  
Kathleen Neal  
Amanda Nichols  
Victoria Ray  
Marilou Rush  
Jean Savory

Dr. David Thomsen  
John Wott

## **\$5 - \$25**

Phyllis Andrew  
Elizabeth Axford  
Karen A Benson-Huck  
Donna Bogumill  
Jean Bowman  
Timme Brewer  
Walt & Dona Bubelis  
Ellen Carnwath  
Julia Craig  
Sara & Jesse Drogin  
Carin Dugowson  
Lana & Alvin Finegold  
Sandy Gordon  
Carol A. Hart  
Annie Horton  
Suzy Jamieson  
Janet Lewinsohn  
Cheryl Marshall  
Dorothy Matsui  
Geri Mensonides

Joyce & Bob Meredith  
Jane & Conrad Messmer  
Jean Moore  
Virginia Olsen  
Peggy Ostrander  
Diane Perman  
Elizabeth Post  
Mary Powell  
Judith Pruitt  
Dorota Rynkiewicz  
Jolene Vrchota & Joe  
Schneider  
Gale & Marcel Schwarb  
Elaine Sherbrooke  
Patricia Siebens  
Frances Joy Spiers  
Nancy Stifel  
Mary Alice Tennant  
Sarah Thomas  
Myrna Torrie  
Mary LeClair Turcotte  
Jane G. Urner  
Joyce Voldal  
MaryAnne & Bob Wilkie



# On Starting a New Neighborhood Group

Karen Brighton and Noma Edwards

**A**PPROXIMATELY 25% OF NPA members belong to a neighborhood group; this opportunity for community with fellow gardeners is one of our more popular benefits. Many new members ask to join a group when they sign up, and they are sometimes frustrated that the group in their area is either closed or meets at a time not convenient to them, such as during the day for a working person.

If you can't find a group that meets your needs you can be sure there are others in your areas who feel the same way. Why not start a new group? Cynthia Wheaton in Everett did just that. Cynthia was a member of Late Bloomers who meet in the Edmonds, but the meetings were 15 miles away and sometimes interfered with her schedule. So she used resources provided by the NPA to start a new group in her area.

Cynthia contacted Ramona, the NPA office administrator, for a list of members in zip codes in her area. She sent an email to these members sharing a bit about herself, her desire for a group in the area meeting in the evenings and asking if they would be interested in joining a local group.

She received a few responses and set a time and date for an informative meeting. Seven people came to this first meeting. They shared details of their own gardens, what they would like from a neighborhood group, agreed upon a time and date they would like to meet, and tossed around ideas for the all-important group name, "The Secateurs." The meeting date was flexible for the first few months as they continued to find the best fit for the group. Cynthia sends meeting announcements to the original contact group and continues to have more members join. When new people in the area join NPA, the office sends their contact information to Cynthia and they are invited to the next meeting.

The group has been meeting for six months and out of a rotating group of 20 people there are between eight and 10 at each meeting. The Secateurs are a dynamic group of gardeners with diverse interests. Their meetings are educational and social. Currently, Cynthia is the group leader and arranges the program and location at libraries and other public places during the winter. From May through summer they meet at members' homes in order to enjoy each other's gardens. They invite other groups in their wider geographic area when they have a speaker in a location that can accommodate a larger group. During their first year they have decided to focus on exploring local resources. Their topics have included visits to Pacific Stone for a presentation on stone sourcing and what a gardener needs to know about using stone; the Everett Library to explore their extensive collection of resources for gardeners; the Evergreen Arboretum greenhouse to discuss the city's process for horticulture in the city, parks and public spaces; and Cascadia Iris in Lake Stevens for information on iris culture.

If you, too, would like to start a new group, please email Membership Co-Chairs Noma Edwards and Karen Brighton at [groups@northwestperennialalliance.org](mailto:groups@northwestperennialalliance.org) for advice and guidance.

We have a guidebook on organizing a neighborhood group that contains information on the efficient running of the group, officers and duties, resources for group presentations, speakers and places to visit. As an added bonus we host an annual neighborhood group leader gathering where group leaders can share their ideas, successes and frustrations with one another. They recently met for a free visit to the Chihuly Garden and Glass museum at Seattle Center.

Don't be shy, if you can't find a neighborhood group start one today!

## NPA NEIGHBORHOOD GROUPS

**Ballard, Magnolia, Queen Anne**  
Dirty Divas

**Bellevue, Mercer Island**  
Eastside Hortaholics

**Camano Island, Stanwood, Marysville**  
Northern Exposure

**Edmonds, Lynnwood, Mukilteo**  
Late Bloomers

**Gig Harbor**  
Harbor Gardeners

**Kenmore, Bothell, Woodinville, Duvall**  
SnoKing Plant Junkies

**Maple Leaf, Northgate, Pinehurst, Lake City**  
Monday Nighters

**Mercer Island, Bellevue**  
Mercerbelles

**North Bend**  
Shovels & Hoes

**Northeast Seattle, Queen Anne, Greenlake**  
NE Clump

**Redmond, Kirkland, Bellevue, Woodinville**  
Eastside Morning Glories

**Renton**  
Joyful Gardens

**Snohomish County**  
Secateurs of Snohomish County

**Snoqualmie Valley, Carnation, Fall City**  
Lilies of the Valley

**Tacoma, Puyallup, Lake Tapps**  
South Sounders

**Tacoma, Lakewood, Olympia**  
Petal Pushers

**Vashon Island**  
Vashon Island Group

**South Whidbey Island**  
Daylight Group

**South Whidbey Island**  
Twilight Group

# Volunteer Spotlight: Denise DuBose

Diana Davidson

DENISE DUBOSE is familiar to many of you. You've seen her greeting members at our lectures in her role as Membership Co-Chair, a position she held for several years. Besides checking people in at lectures, Denise has been one of the people who handled new membership applications and renewals, and created packets for new members who signed up in person, online, or at the Northwest Flower and Garden Show.



As Membership Co-Chair, Denise invested a great deal of time fostering the success of NPA's neighborhood groups program. She and her co-chair, Karen Brighton, served as communicators and information resources for the groups. They organized an annual thank you lunch for group coordinators, allowing time for them to share ideas about places to go and things to do. Denise also visited neighborhood group meetings, working to increase connectivity among groups and encouraging involvement in NPA activities. She and Barb Danek founded a Snoqualmie Valley neighborhood group, the Shovels and Hoes. Denise is now pleased to turn over her Membership duties to a new Membership Co-Chair, Noma Edwards, who will work with ongoing Membership Co-Chair Karen Brighton.

As an active member of the NPA Board, Denise has been involved in other aspects of the organization as well, helping to recruit volunteers to the board and selecting plants for sale at our NPA plant stand at Bellevue Botanical Garden. In the past she has also been involved in setting up NPA classes, including concrete leaf making and cultivating mushrooms. She figured that if she was interested in something, others would be, too.

Coming from an Italian family that always had a vegetable garden, Denise grew up with plants. She didn't become a gardening addict until her children grew up, then the interest hit her like a ton of bricks...or maybe a ton of crushed rock and compost, which she and her husband, Steve, moved into their current garden.

She and Steve have opened their garden twice. Visitors have been intrigued by her creative vertical structures, which help her consolidate her vegetable garden. She has also recruited members of her neighborhood group to open their gardens.

Like many members, Denise loves the Open Garden aspect of our organization and the opportunity to make friends through other NPA activities. If you have yet to know Denise, she would love to meet you at a lecture, or as a plant sale volunteer.



## NPA Advisory Board

Kelly Dodson	Linda McDonald
Val Easton	Chitra Parpia
Roger Gossler	Charles Price
Pam Harper	Debra Prinzing
Dan Hinkley	Barbara Swift
Thomas Hobbs	Joanne White
Nancy Kartes	Glenn Withey
Denise Lane	Barbara Wright

## Northwest Perennial Alliance

*The Northwest Perennial Alliance is a community of friends, neighbors and experts who share a passion for gardening in the Pacific Northwest. Everyone is welcome.*

Website: [www.n-p-a.org](http://www.n-p-a.org)  
Phone: 425-647-6004  
Email: [info@northwestperennialalliance.org](mailto:info@northwestperennialalliance.org)

### NPA 2015-2016 Officers:

Kit Haesloop, President: 425-333-6529  
Diana Davidson, Vice President: 425-896-8040  
Ellie Sanchez, Secretary: 425-828-6820  
Trish Brooks, Treasurer: 360-579-2030

### Membership:

Memberships are \$35 for individuals, \$45 for household, \$75 for business, \$20 for students. The membership year runs from January-December. To join, visit [www.n-p-a.org](http://www.n-p-a.org) to pay electronically or download a membership form. You may also mail a check payable to NPA, to the address below. Include your name, mailing address, email address and telephone number. NPA accepts certain credit cards and debit cards by telephone at 425-647-6004.

### Donations:

NPA is a registered 501(c)(3) nonprofit organization and your donations are tax deductible to the extent allowable by law. Donations are used to support our educational programs, including Open Gardens, lectures, workshops, the NPA Border and student scholarships.

### Submissions and paid advertisements:

Contact the Post Editor at  
[post@northwestperennialalliance.org](mailto:post@northwestperennialalliance.org)

The Perennial Post is published by:  
Northwest Perennial Alliance  
19105 36th Avenue West, Suite 211  
Lynnwood, WA 98036

Volume 26, Issue 2  
Spring 2016

Editor: Michele Cournoyer  
Copy Editors: Sara Drogin, Wendy Lagozzino

Printer: Precision Press, Redmond

All material (c)2016 NPA. Reprint by permission only.



## THE PERENNIAL POST

Northwest Perennial Alliance  
19105 36th Avenue West, Suite 211  
Lynnwood, WA 98036

NON-PROFIT ORG  
U.S. POSTAGE  
PAID  
BELLEVUE, WA  
PERMIT NO. 168

## Spring Plant Sale May 1



## Your 2016 Open Gardens Directory arrives this month!

Check it out right away to start planning a season full of gardening adventures from May to October. As an NPA member, you'll have the opportunity to visit 86 private gardens not usually open to the public, as well as fabulous public gardens and nurseries. This year, we have 34 new gardens joining our tried-and-true favorites. The Open Gardens Directory is your invitation to share your love of gardening with fellow enthusiasts, see what they're up to, and gather some ideas and inspiration to take home. Experience our beautiful state garden by garden, from Mount Vernon to Olympia, Port Townsend to Yakima, and so many other beautiful locations.



Jacob and Teresa Kohn garden



Cathy Atkins garden (Lavenderwood)



Fran Camber garden